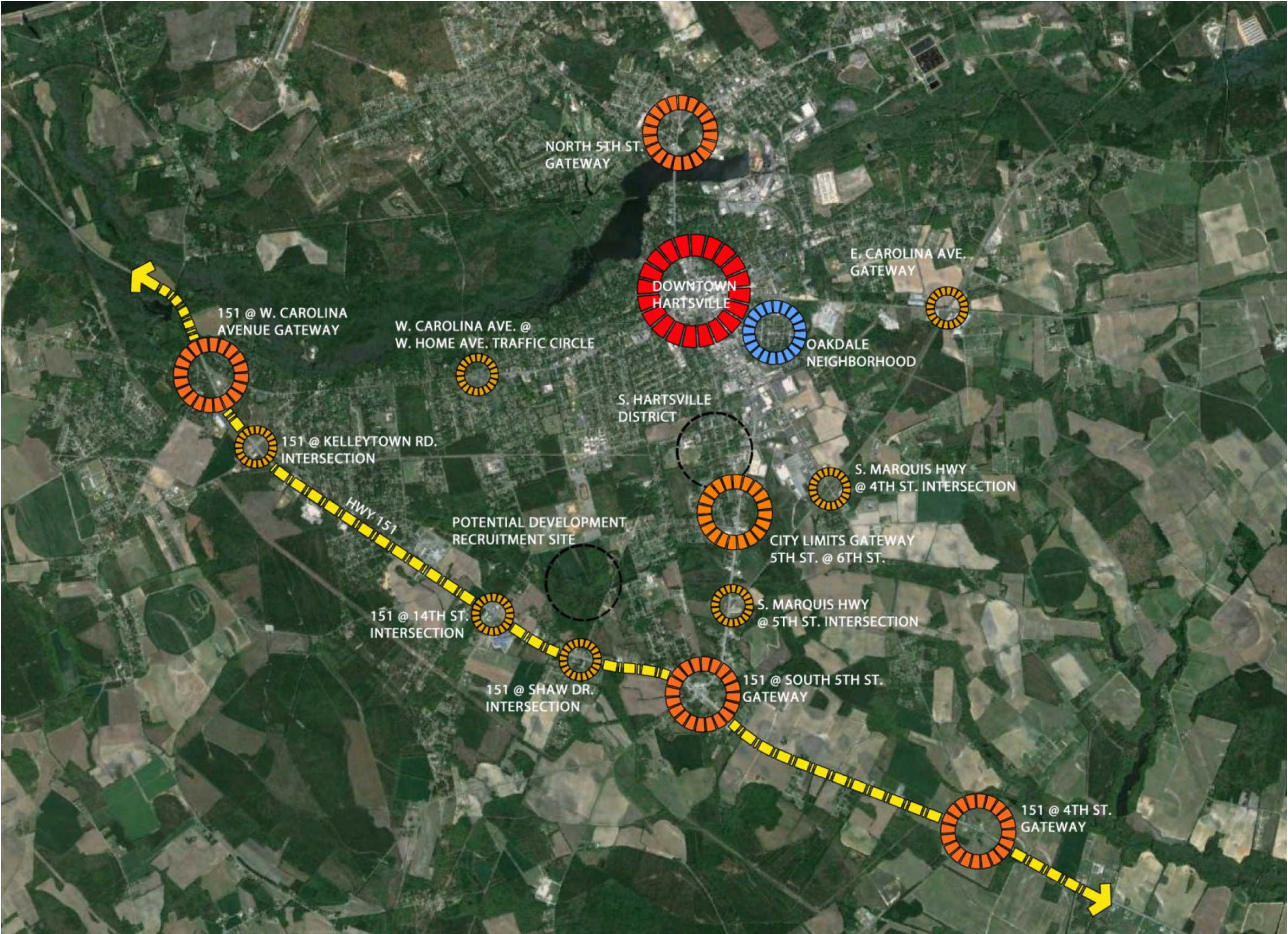


# PRIORITY FOCUS AREAS



Based on input provided by City Staff and the Steering Committee, key areas of focus were identified for proposed improvement recommendations as illustrated in exhibit to the left.

The Highway 151 corridor is classified as highly significant as it carries the highest volume of traffic around the south side of Hartsville’s city limits. With the exception of the North 5th Street entryway, three of the four main gateways are located on Highway 151 at the intersections of West Carolina Avenue, South 5th Street and 4th Street, where substantial landscaping and signage improvements are proposed.

The following intersections are prioritized for completion in Phase I based on the visibility and positive “first impression” opportunities to direct people into Hartsville, the location within city limits and potential for public private partnerships to construct and maintain.

- 151 @ West Carolina Avenue
- City Limits at South 5th and 6th Streets
- North 5th Street at the Prestwood Lake bridge

Additional minor gateways have been identified at supplementary intersections which would also be augmented with landscaping and signage of a slightly lesser scale. Key districts identified for this study were the Oakdale Neighborhood, Butler Heritage Campus, Downtown, College Avenue and the vehicular corridors of 5th Street and 6th Street.

LEGEND

DOWNTOWN

PRIORITY GATEWAY IMPROVEMENTS

FUTURE REDEVELOPMENT AREA

PRIORITY HOUSING DEVELOPMENT

SECONDARY GATEWAY IMPROVEMENTS